

# **“KRISHNA KUNJ”**

Proposed residential scheme at S.NO.66/1/1/4, Kondhawa(Bk)  
Market Yard-Shatrunjay Road, Pune.

A Project By  
**PATHAK REALTORS LLP**

**Presentation by E GROUP ARCHITECTURE**

**Date: 22/11/2013**

# **“KRISHNA KUNJ”**

## **Proposed residential scheme at S.No.66/1/1/4,Kondhawa (bk) Market Yard-Shatrunjay Road, Pune :**

### **Index:**

#### **•Site and context:**

- Satellite images of site and surroundings

#### **•Alternative 1: Twin bungalows:**

- Space management
- Floor plans
- Views
- Calculations

#### **•Alternative 2: Apartments:**

- Floor plans
- Views
- Calculations

#### **•Alternative 3: Apartments: Optional layout:**

- Floor plans
- Calculations

#### **•E GROUP ARCHITECTURE : REFERENCE PROJECTS OVERVIEW**

## Site and context:



Fig. 1: Satellite image of site and surroundings



## Site and context:

AREA OF PLOT = 273.67 SQ.MTS (2945 SQ.FT.)

INTERNAL CONCRETE ROAD 20'0" WIDE

QUITE AND SERENE SURROUNDING WITH EASY ACCESS



Fig. 2:  
Satellite image of site and access road

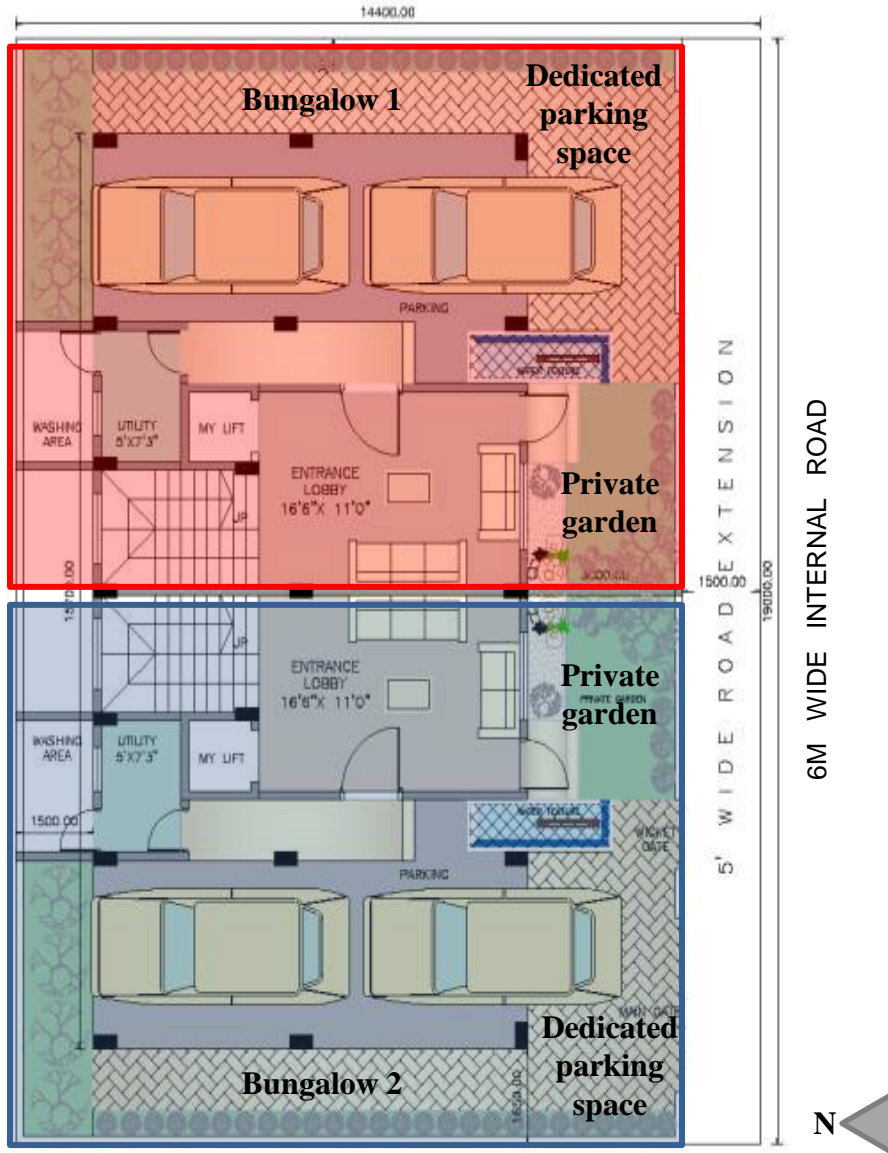
## Twin bungalows:



Fig. 3: Bird's eye view



## Twin bungalows: Space management:



### Advantages and key features:

- Proximity to Market yard
- Convenient access
- Good infrastructure
- Ample privacy
- Proximity to Shatrunjay Mandir and ISKCON temple

Fig. 4: Concept design: Twin bungalows

## Twin bungalows:

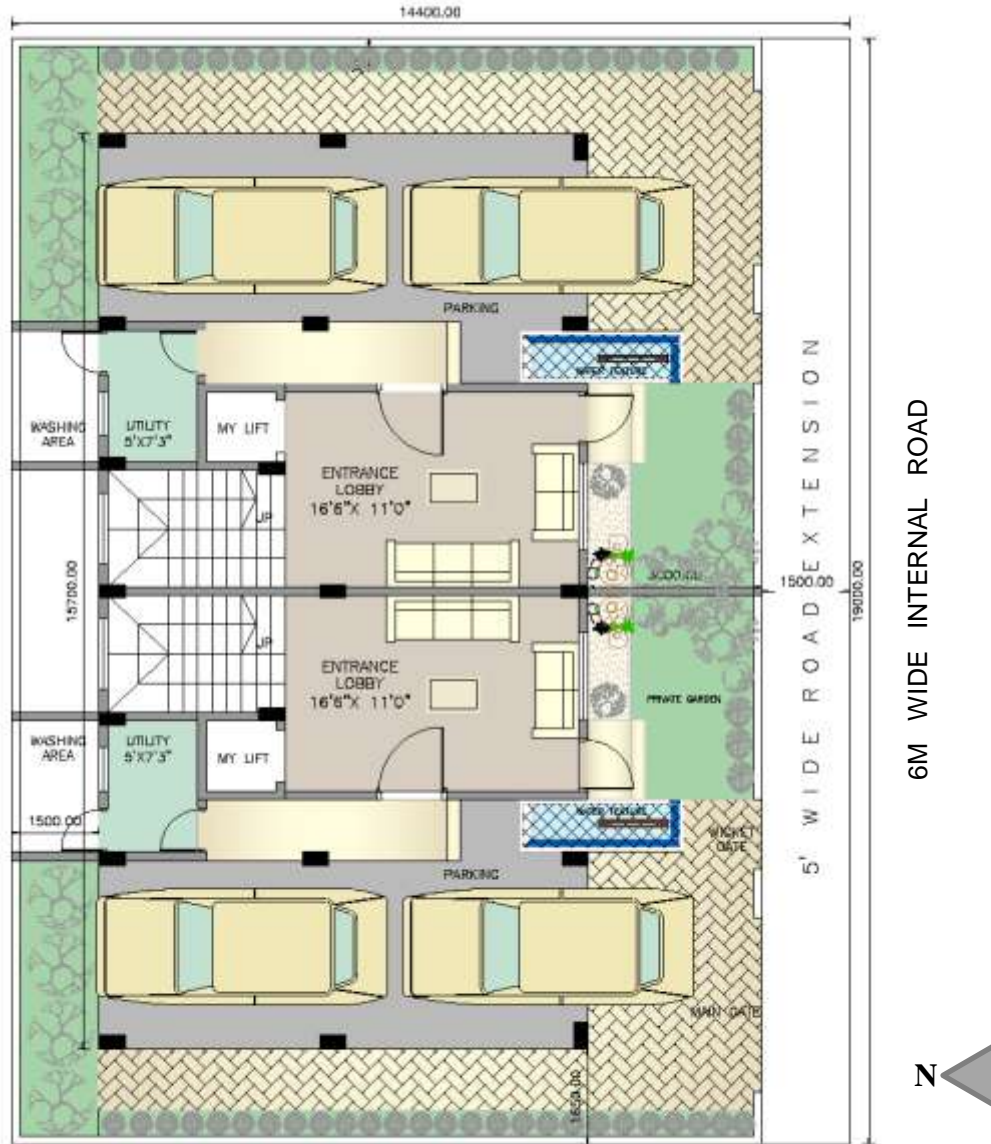


Fig. 5: Parking floor plan with site



Fig. 6: Southwest side view



Fig. 7: Bird's eye view

## Twin bungalows:

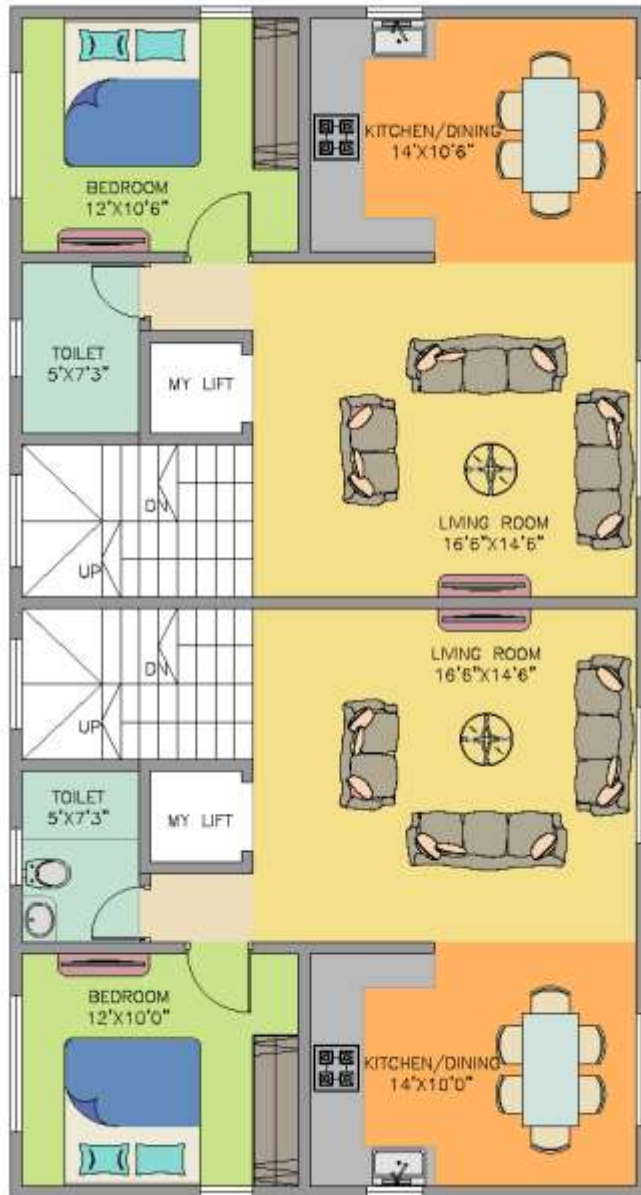


Fig. 8: First floor plan

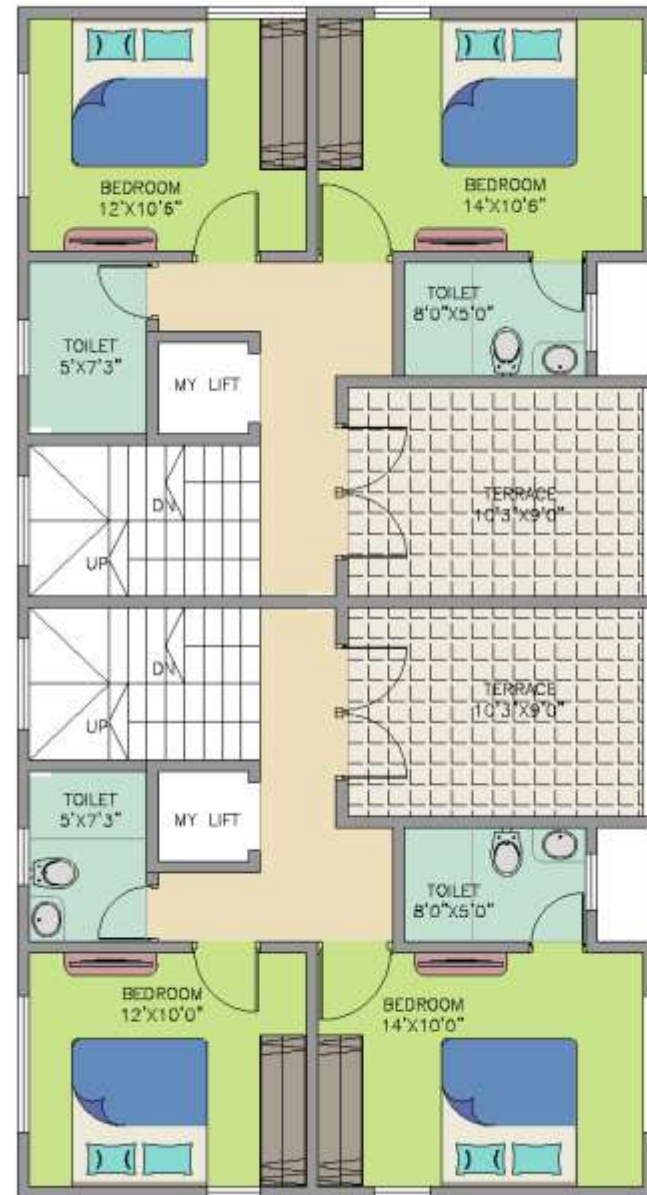


Fig. 9: Second floor plan





## Twin bungalows:

### Area statement for one unit:

Floor	Carpet area (sq. ft.)	Staircase area (sq. ft.)	Terrace area (sq. ft.)	Lobby area (sq. ft.)
Parking floor	-	83	-	182
First floor	560	83	-	-
Second floor	445	83	115	-
Total	1005	249	115	182



Fig. 10: View of private garden and parking  
PRESENTATION BY E GROUP ARCHITECTURE



“A great building must begin with the immeasurable, must go through measurable means when it is being designed and in the end must be immeasurable.”

**-Louis Kahn**

# E GROUP ARCHITECTURE

## DESIGN AND DESIGN MANAGEMENT

722/12 B SHRINIWAS, LAXMI PARK COLONY, NEAR SENADATTA POLICE CHOWKY, NAVI PETH, PUNE 411030  
E MAIL: [harshal@egrouparch.com](mailto:harshal@egrouparch.com) WEB SITE: [www.egrouparch.com](http://www.egrouparch.com) CELL NO: +91 9960683944

# EGA: INTRODUCTION

**E GROUP ARCHITECTURE** is a catalyst consultancy organization that caters services to the construction industry for design and design management.

Practical and Analytical approach always gives strong foundation for projects. Creating an **E quotient** for the project stake holders would result in creating a sustainable future.

**E quotient** is to create a perfect harmony in architectural and interior projects where **E** stands for **E**volving an **E**xpressive, **E**xclusive, **E**ternal, **E**lite desirable **E**nvironment created considering aspects of **E**nergy and **E**motions with a strong **E**ngineering and **E**valuating approach.

Combination of appropriate **E's** to make the project successful is the prime objective of **E GROUP**, with capability of designing projects along with an attitude to associate and collaborate in design and design management services.

# SERVICES OFFERED:

At E GROUP ARCHITECTURE we offer all or any of the services mentioned below:

- Architectural space detailing
- Architectural detailing
- Interior designing
- Contract documentation
- Construction documentation
- Pre-construction and post construction auditing of drawings and documents
- One point contact for architectural projects(includes consultancy for designing, liaison with local authorities, allied services)for small or medium scaled projects under the jurisdiction area of the proposed PMRDA(Pune Metropolitan Regional Development Authority)
- Architectural consultancy
- Interior space planning

We believe that quality envisaged in a project is achievable only if a 'TEAM' works in harmony to deliver the 'BEST' for the client and the end user



## PROPOSED BUNGALOW FOR SHINGAVI FAMILY AT SALISBURY PARK,PUNE

This is a residential bungalow at Salisbury park. It is an 3 storey bungalow with 4 bedrooms, family room, puja room and living, kitchen and dining room. The residence is holistically designed to suit the specific needs of the family. The exterior and interiors have been designed with attention to detail and innovative use of materials is seen. The architecture , Interior , exterior and landscaping go hand in hand in this project giving the client the desired end product.



VIEWS

# PROPOSED BUNGALOW FOR SHINGAVI FAMILY AT SALISBURY PARK,PUNE





PROPOSED  
BUNGALOW FOR  
SHINGAVI FAMILY  
AT SALISBURY  
PARK,PUNE







## BUNGALOW FOR KULKARNI FAMILY AT SANGAM SOCIETY,PUNE

This is a residential bungalow at Sangam society. It is an 2 storey bungalow with 4 bedrooms, family room, puja room and living, kitchen and dining room. The residence is holistically designed to suit the specific needs of the family. The exterior and interiors have been designed with attention to detail.



## VIEWS



## PROPOSED BUNGALOW FOR MR.BAPHNA AT ERANDWANE,PUNE

This is a residential bungalow at ERANDWANE, PUNE. It is an 2 storey bungalow designed around a central courtyard in Kerala style architecture. The house has sloping roofs with wooden finish columns and railings completing the Kerala look with landscaped garden and courtyard to add to the ambience.





## VIEWS



## PROPOSED RESIDENTIAL SCHEME AT BALEWADI ,PUNE

This is a residential project at Balewadi with 2 wings A & B. Each wing is an 4 storey apartment with a single 3 BHK unit on each floor. Each flat has a spacious layout attached terraces and dry balconies. The project has excellent modern infrastructure with subtle yet interesting aesthetics.





# PROPOSED RESIDENTIAL SCHEME AT KARVENAGAR ,PUNE

This is a residential project at Karvenagar. It is an 4 storey apartment with a single 3 BHK unit on each floor. Each flat has a spacious layout attached terraces and dry balconies. The project has excellent modern infrastructure with subtle yet interesting aesthetics.



INTERIOR LAYOUT OF FLAT



VIEW